

Milnathort Placecheck Issues

Long Grass & Biodiversity



Biodiversity Officer with children from Milnathort Primary

You may have noticed that long areas of grass have been left around the trees in our parks. These have been planted with wildflowers and are to encourage biodiversity in the area. These areas will be cut once a year.

Community Orchard

The vacant plot in South Street was an eyesore and had had a variety of projects put forward for it over the years. The community aim was to create a Community Orchard with a wild flower meadow which required minimal maintenance e.g. cutting the grass and removing it, and pruning of the trees once a year. The orchard group raised £6355 for the orchard from Milnathort Community Council, the Kinross-shire Fund, the Forestry Commission, PKC Quality of Life Trust and Milnathort in Bloom. The site was cleared in October 2010 with the access ramp and new boundary fence installed at the same time. The apple trees, all old Scottish varieties were purchased. In early March 2011, the group and children from Milnathort Primary School planted the trees in the orchard. Then the wildflower seeds were mixed with sawdust and the children scattered this across the site. A crab apple and a plum tree were added in April. A small fence was erected around the rear of the bus stop and an information board was installed in June.



What is Placecheck?

Placecheck is about improving public spaces by the Council and the community working in partnership. The aim is to get people working together to improve their local area and work with the Council on shared priorities.

Milnathort Placecheck started with a community event in August 2009 where the community had the opportunity to walk around the Milnathort area with Council Officers and identify what they liked, didn't like and wanted to improve. This was followed by an action planning session in September 2009 and an exhibition of designs during May 2010. Since then there has been a great deal of work done by the community and the Placecheck Design Team carrying out projects to meet the priorities identified.



We hope that you are happy with the improvements as they start to take shape. Proposals can be downloaded from the Placecheck webpage: www.pkc.gov.uk/placecheck

Diane Cassidy, a Senior Community Capacity Building Worker helps to support Placecheck and other community engagement activities within The Environment Service. She works with communities to help take issues forward that have been identified. You can contact Diane on **01738 475396** or **Placecheck@pkc.gov.uk**

Thankyou

Thankyou to Milnathort Community Council for their help with the consultations and for delivering the newsletters. Thanks to the Thistle Hotel for sponsoring the barbecue at Jessie's Park.



Milnathort Placecheck Newsletter November 2011



Park Celebrations

On the 26th May residents of Milnathort celebrated the Placecheck park improvements. There was an official re-opening ceremony in the park at Back Loan. Over 100 people came out to watch Councillor Robertson cut the ribbon. The Thistle Hotel kindly provided a free barbecue for the children.

Later that day a celebration took place with the older teenagers at Donaldson Park where Councillor Baird cut the ribbon to officially open



the new Youth Shelter. Youth Services put on a range of activities including arts and crafts and street football which were enjoyed by the teenagers.

Updates on Priorities

Roads Issues

Victoria Avenue

It is hoped that Victoria Avenue will be changing to a one way system. Consultation will be conducted in due course by the Council's roads section and it may take one year to complete the process and enact traffic orders.

Gateways to Milnathort

The new signs at the gateways to the village have been installed and the Bloom Committee are looking at options for planting to enhance these gateways. The 40mph limit between Milnathort and Kinross will be lowered to 30mph to make it safer for school children at Loch Leven Campus and a 40mph buffer will be introduced on Perth Road.



For further information please contact:

Placecheck@pkc.gov.uk

or

Diane Cassidy:

(01738) 475396

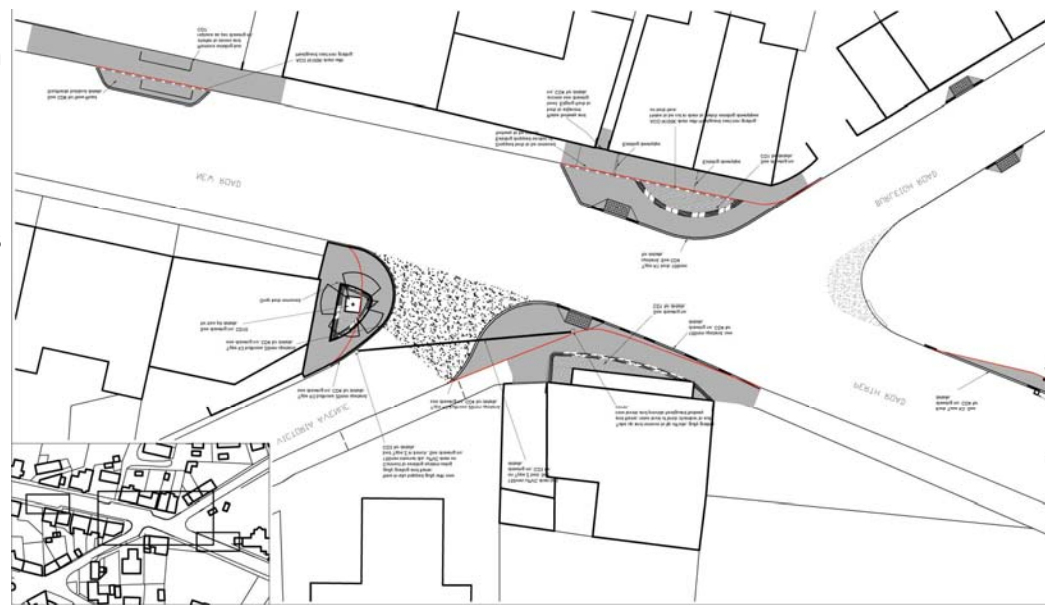
Andy Clegg:

(01738) 475276

Roads Issues (continued)

Burleigh Road Junction and Westerloan area

The improvements to the Wester Loan area and the Burleigh Road junction are due to start in January 2012. These works are weather dependant. The designs shown here can be downloaded from the Placecheck webpage.



Burleigh Road: proposed improvements

South Street improvements

A Zebra crossing is to be installed on South Street to allow children to cross safely to Donaldson Park and on to Milnathort Primary School. There will also be improvements to the Church Street and Golf Club entrance. Due to engineering issues that we are unable to resolve at this time we are unable to carry out the proposed improvements to the bus stop.

Burleigh Road

The footpath at Burleigh Road was recently resurfaced and various options are still being investigated to lower vehicle speeds in the area.



Wester Loan: proposed improvements

Greenspace Projects

Jessie's Park

The park at Back Loan is to be renamed Jessie's Park in memory of the late Jessie Porter who was a well respected member of the community. The Council will work with the community to put up a new sign and some new planting in the park. This small play park has been improved with a new seesaw, multi unit and an improved entrance.



Donaldson Park

The Primary 4 class from Milnathort Primary took part in a wildflower planting afternoon on the 26th May where they learned about improving biodiversity. Areas of grass in Donaldson Park are to be cut less often and the wildflowers and bulbs will be allowed to grow. The flowers will self seed and take a while to become established. This activity was part of the National Biodiversity Week and each child was given a packet of wildflower seeds. In October a group also



Children from Milnathort Primary planting wildflower plugs

planted bulbs there.

A range of improvements have now taken place in Donaldson Park including installing a youth shelter, a springie, a roundabout, landscaping, planting and the entrance is to be upgraded. The youth shelter is for people to sit in and is not a piece of play equipment to be climbed on, therefore there is no safety surface underneath. As well as being used by teenagers, the youth shelter has received unexpected popularity with local dog walkers who are enjoying a new place to meet!



War Memorial planting

Some improvements have been done to the war memorial area and the Bloom group will be involved in future planting.

Ba' Hill Improvement

Landscaping has been done and the new seats are now in place at Ba' Hill so people can take advantage of admiring the great view from this viewpoint.



New bench at Ba' hill

Auld Mart

Trees were planted on the open space area at Auld Mart. We had planned to also add seating to the area but decided the seating would be too close to the housing and users could disturb residents in the area.



Trees at Auld Mart

Disruption During Placecheck Works

Perth & Kinross Council is planning to undertake the works detailed in this newsletter this financial year. Regrettably, there will be some inconvenience to surrounding premises during the works. However, every effort will be taken to maintain access to the properties and to keep any disruption to a minimum. We would respectfully request your co-operation while the work is being carried out as this will allow us to complete the works as quickly as possible. Should the proposed works cause you any particular concerns please do not hesitate to contact Traffic & Road Safety on 01738 477387 to discuss the matter.